

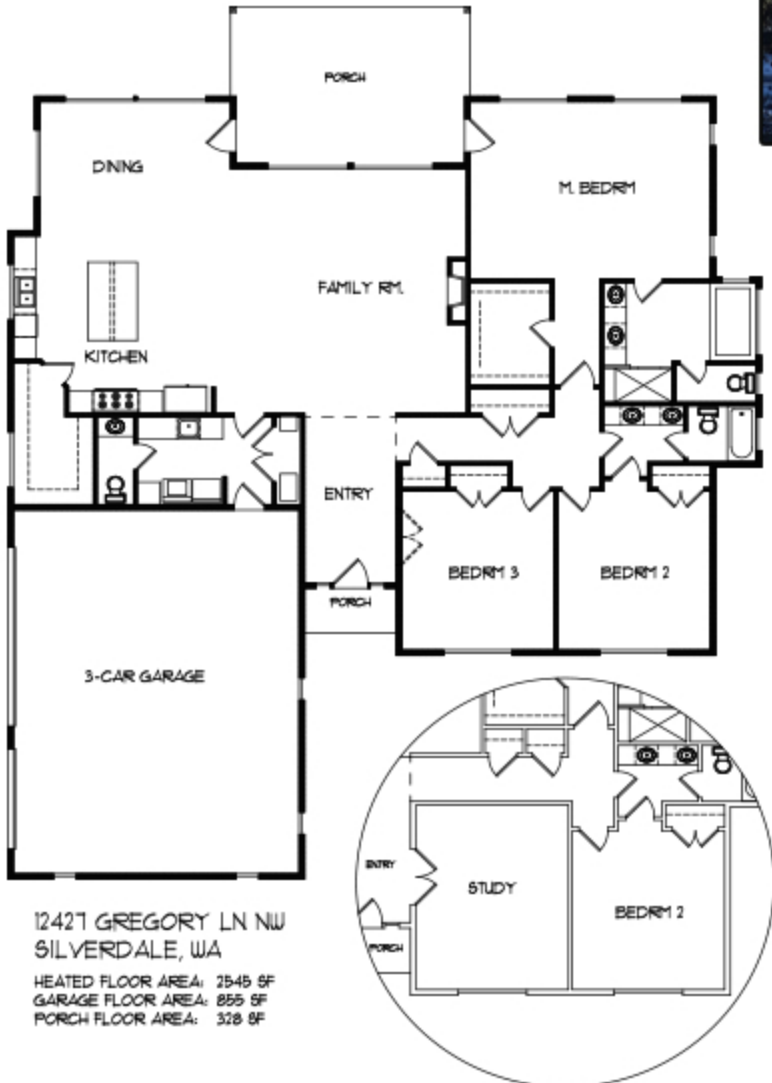


12427 Gregory Lane NW Silverdale WA 98383

HUGE 30,000+ SF Lot with a Beautiful View of the Olympics Mountains Approximately 2550 SF of Living Space and an Oversize 3 Car Garage
 3 Bdrm, 2.5 Bath (Optional 2 Bedroom W/Large Den)
 HUGE Covered back Porch Rare Close-in Silverdale Location, only a 5 minute walk to the Kitsap Trail System.



OLYMPIC VIEWS



Contact: Ken West
 360-990-2444
 kenwest@johnlscott.com



12427 GREGORY LN NW
 SILVERDALE, WA
 HEATED FLOOR AREA: 2545 SF
 GARAGE FLOOR AREA: 855 SF
 PORCH FLOOR AREA: 328 SF

